



Please contact SMC for detailed dimensions, specifications and lead times.

1 For Pneumatic Cylinders (ø180, ø200)

Symbol
-X530

JA series standard type floating joint which is used for pneumatic cylinders (ø180, ø200)

* This product is dedicated to the pneumatic cylinders.



Model/Specifications

Applicable bore size (mm)	Model	Applicable cylinder nominal thread size	Maximum operating tensile and compressive force (N)			Allowable eccentricity (U)	Rotating angle	Ambient temperature
			Basic type	Flange type	Foot type			
180	JA□180-40-150-X530	M40 x 1.5	71000	55000	55000	3	5°	-5 to 60°C
200	JA□200-45-150-X530	M45 x 1.5						

Specifications

Operating pressure	Pneumatic cylinder: 1 MPa or less
Mounting	Basic type, Flange type, Foot type
Operating range 	

How to Order

JA F 180 - 40-150 - X530

- Mounting type**

Nil	Basic type
F	Flange type
L	Foot type
- Applicable bore size**

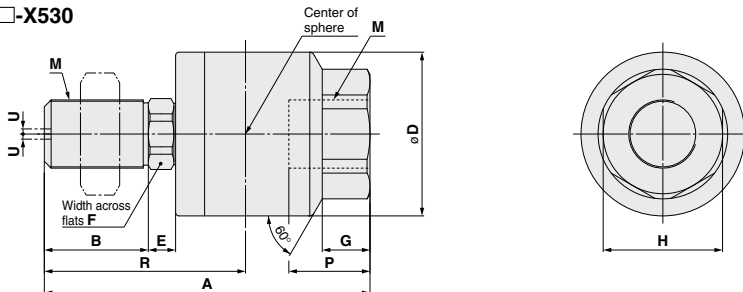
Symbol	Applicable bore size
180	180 mm
200	200 mm
- Nominal thread size**

Nominal thread size	Applicable cylinder nominal thread size
40-150	M40 x 1.5
45-150	M45 x 1.5

• For pneumatic cylinders (ø180, ø200)

Basic Type: JA

JA 180 / 200 - □ - X530



Dimensions

Applicable bore size	Model	M		A	B	D	E	F	G	H	Center of sphere R	Maximum screw-in depth P	Allowable eccentricity U	Maximum operating tensile and compressive force (N)	Weight (kg)
		Nominal size	Pitch												
180	JA180-40-150-X530	40	1.5	191	61	96	16	36	28	70	118	49	3	71000	5.3
200	JA200-45-150-X530	45	1.5	191	61	96	16	36	28	70	118	49	3	71000	5.4

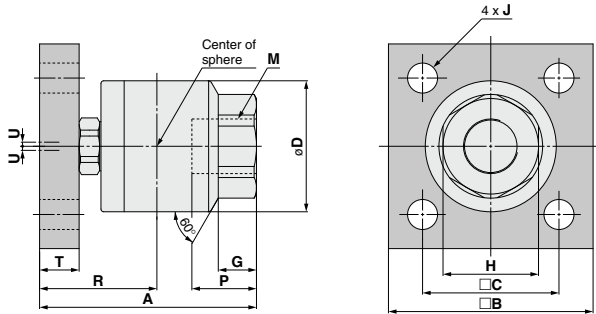
D-□

-X□

Technical Data

Flange Type: JAF

JAF ¹⁸⁰/₂₀₀ □-X530

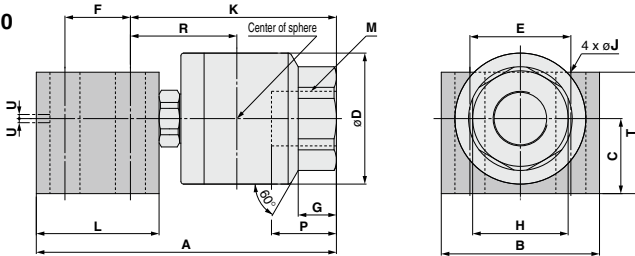


Dimensions

Applicable bore size	Model	M		A	B	C	D	T	J	G	H	Center of sphere R	Maximum screw-in depth P	Allowable eccentricity U	Maximum operating tensile and compressive force (N)	Weight (kg)
		Nominal size	Pitch													
180	JAF180-40-150-X530	40	1.5	159	150	100	96	29	22	28	70	86	49	3	55000	9.1
200	JAF200-45-150-X530	45	1.5	159	150	100	96	29	22	28	70	86	49	3	55000	9.2

Foot Type: JAL

JAL ¹⁸⁰/₂₀₀ □-X530

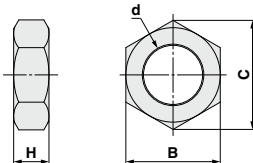


Dimensions

Applicable bore size	Model	M		A	B	C	D	E	F	K	L	T	J	G	H	Center of sphere R	Maximum screw-in depth P	Allowable eccentricity U	Maximum operating tensile and compressive force (N)	Weight (kg)
		Nominal size	Pitch																	
180	JAL180-40-150-X530	40	1.5	220	116	55	96	74	48	151	90	89	22	28	70	78	49	3	55000	10.3
200	JAL200-45-150-X530	45	1.5	220	116	55	96	74	48	151	90	89	22	28	70	78	49	3	55000	10.4

Rod End Nut

The basic type has one rod end nut attached, it is possible to order additional pieces by the order numbers below.



Model	Order no.	d: Nominal thread size	H	B	C
JA180-40-150-X530	DA00425	M40 x 1.5	23	60	69.3
JA200-45-150-X530	DA00447	M45 x 1.5	27	70	80.8

1150

Floating Joint Replacement Parts

Dust cover

When the dust cover is damaged and deteriorated, order with the part number below.

Replaceable dust cover is only for the basic type. Flange type and foot type cannot be replaced.

Part no. for dust cover	Applicable model
P215295	JA180, 200 □-X530